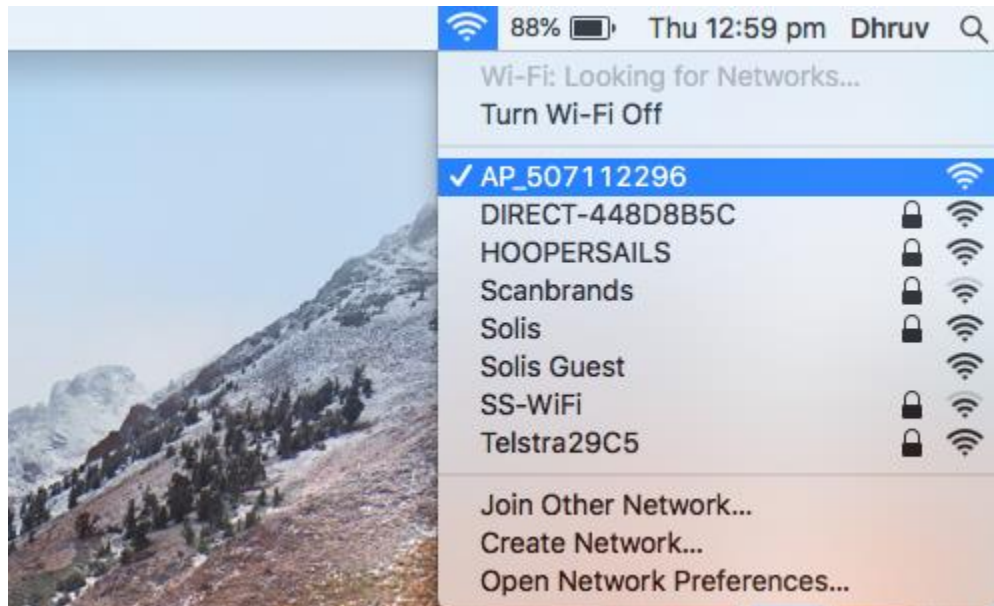




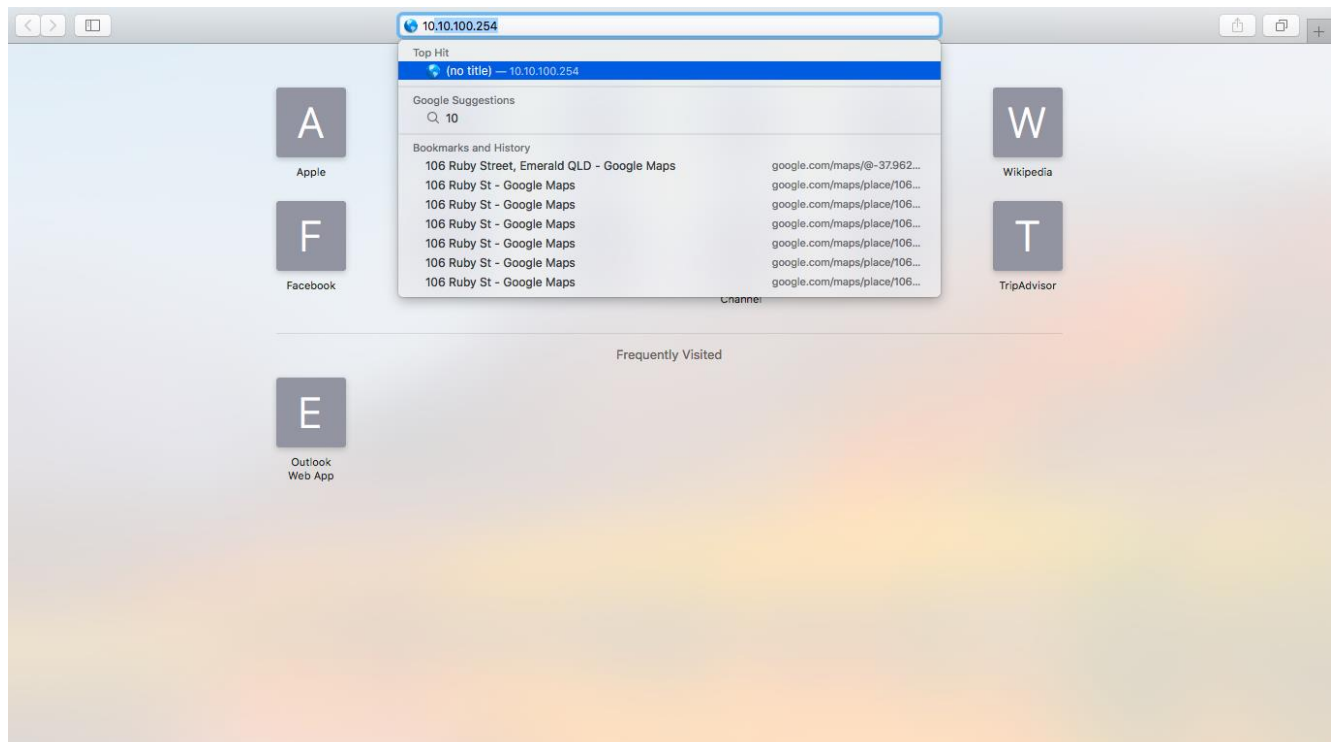
**NOTE: IN ORDER TO PROCEED WITH THESE INSTRUCTIONS, YOU SHOULD HAVE A PC OR A MAC THAT HAS ACCESS TO THE HOME'S WIRELESS WIFI.**



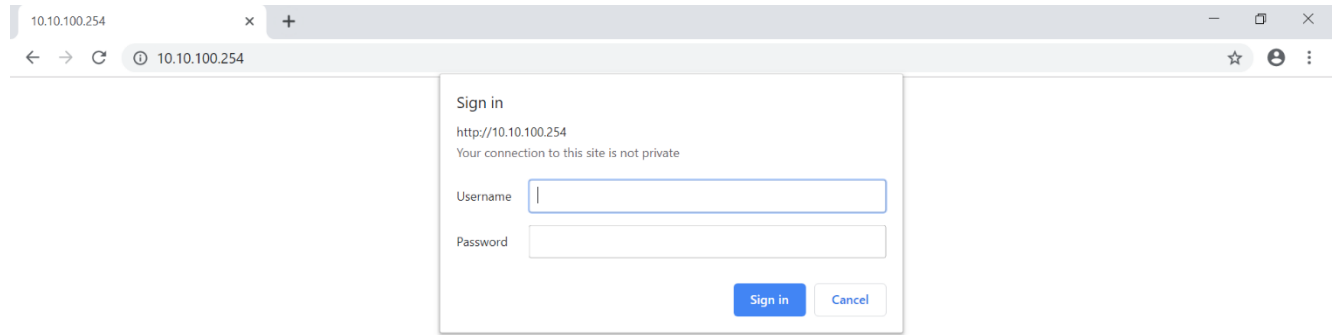
1. Make sure that the WI-FI dongle is inserted into the inverter and have a laptop or a PC that has access to the WIFI.
2. On a Mac go to the WIFI settings and find **AP\_XXXXXXX** and connect it as shown below:



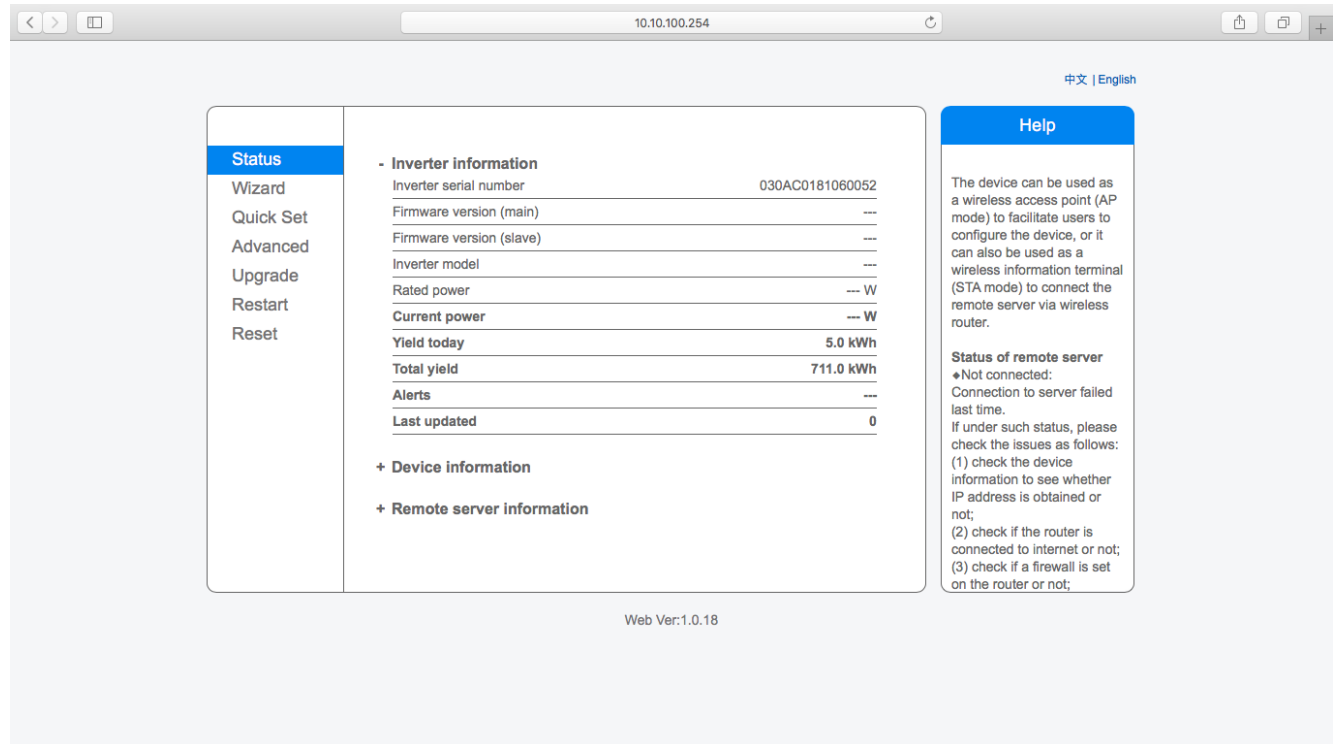
3. Open Google's Chrome browser or Firefox and in the URL bar type in the following IP Address: **10.10.100.254**



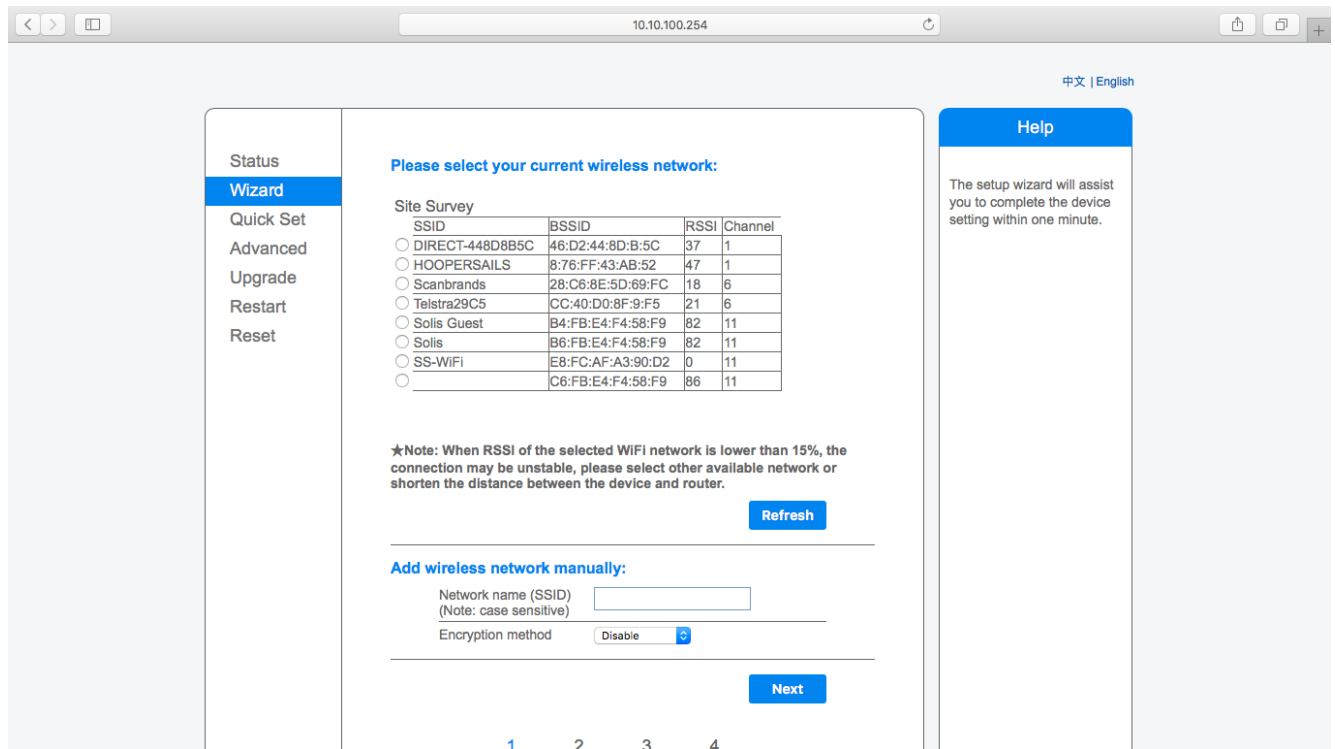
4. If it asks for any username or password, please enter **admin** and **admin** for both fields and press **Sign in**



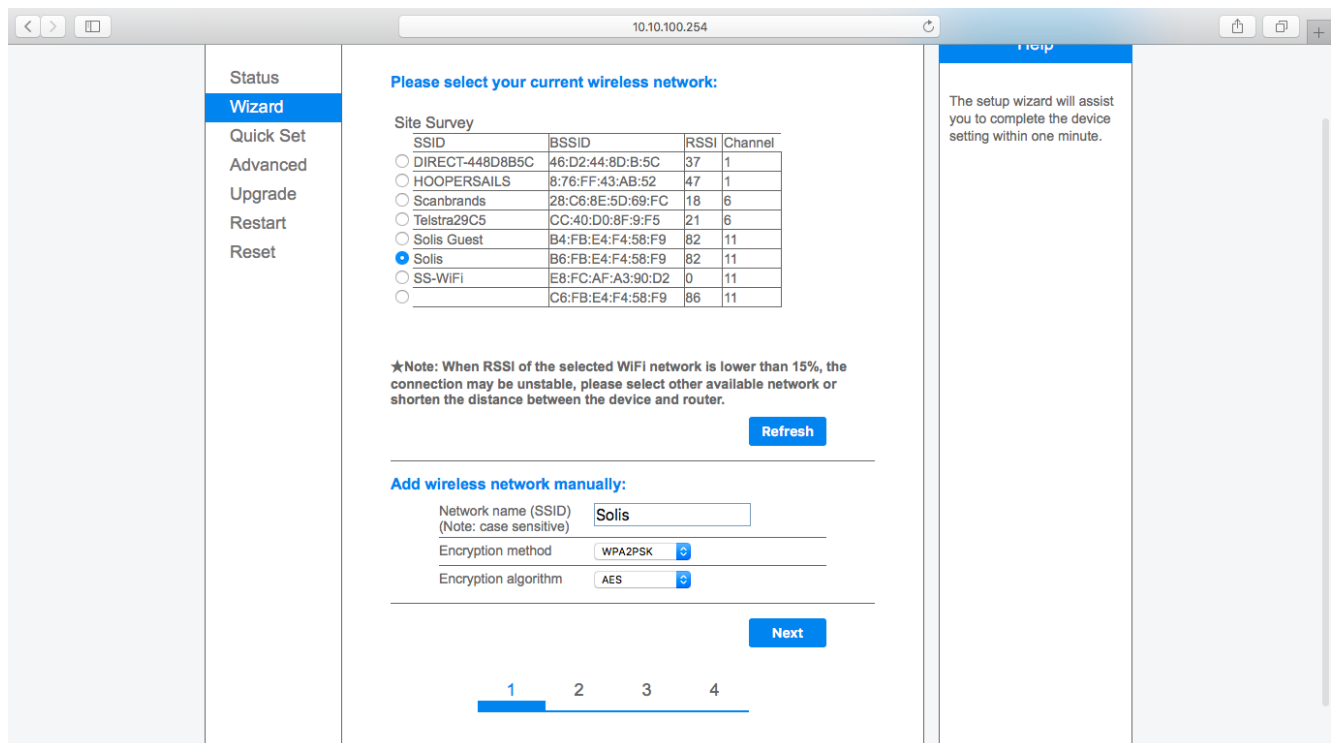
5. You will see this:



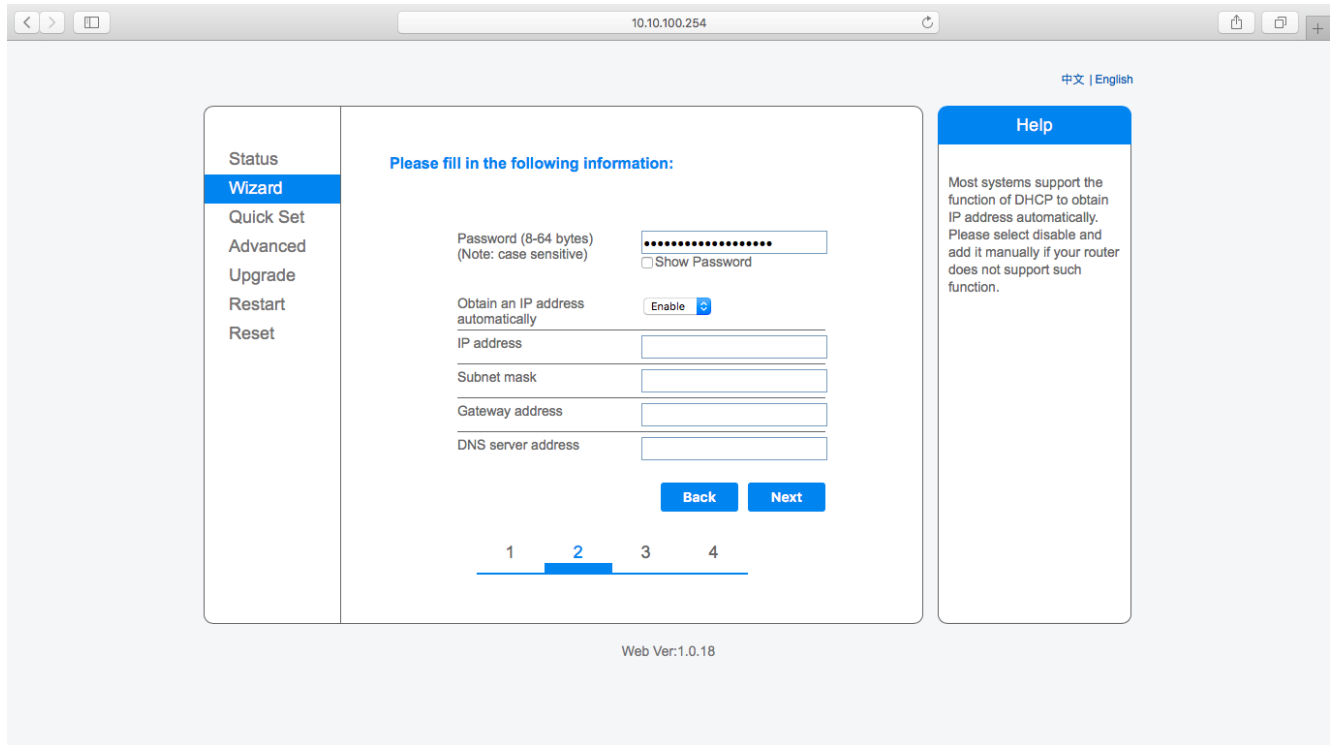
6. Select **Wizard** and you will see something like this:



7. Find your Home's Wi-Fi name, it could be Telstra or DODO or anything that you use to browse internet at your place. If you can't find, please press Refresh Click **Next** and you should see this screen: **(Make sure RSSI of your network should be more than 30, if not adjust the router)**

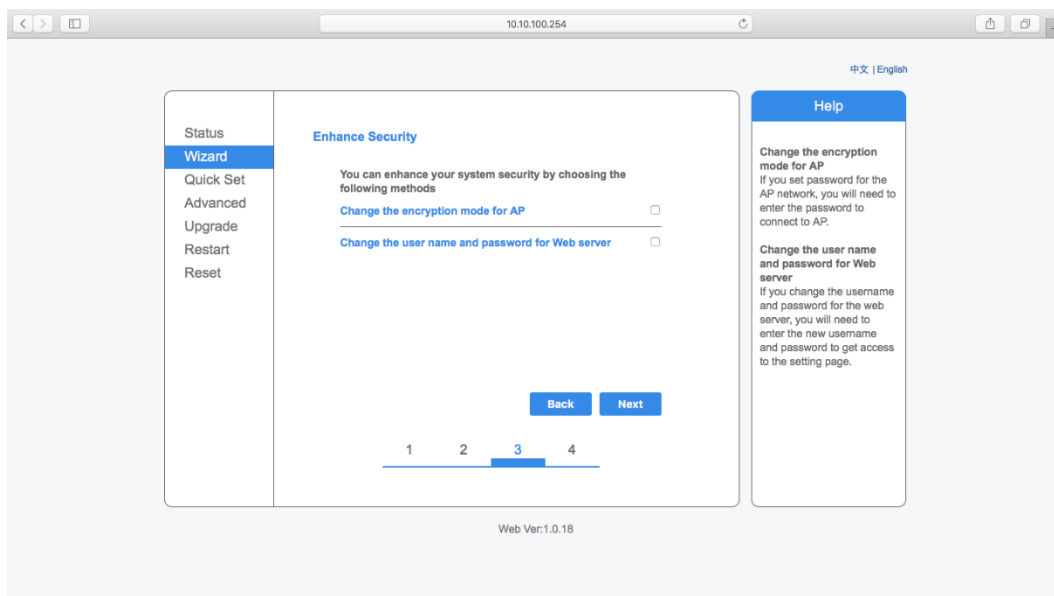


8. Click on Show password option as it helps to see the password while you type in. Enter the password for your Home's Wi-Fi and press **Next**.

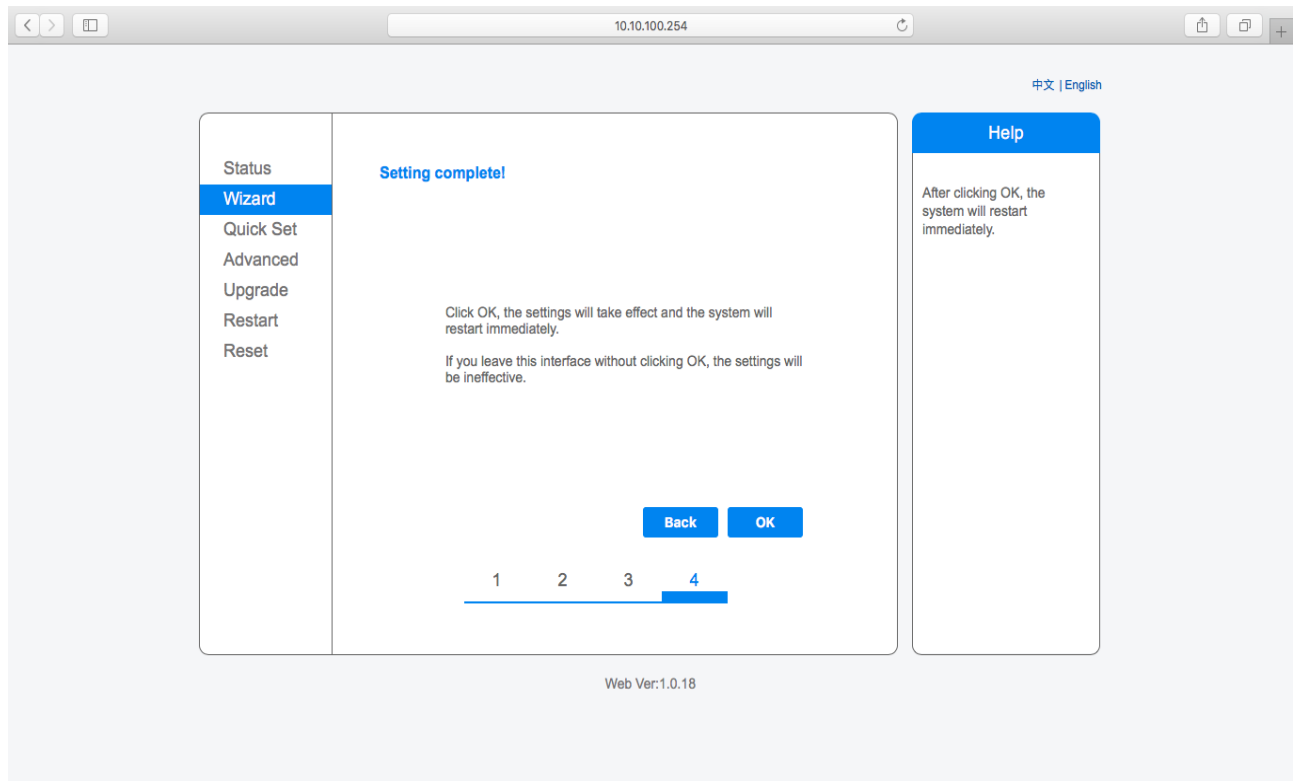


9. You see this:

Note: You don't have to click or change anything, just click **Next**

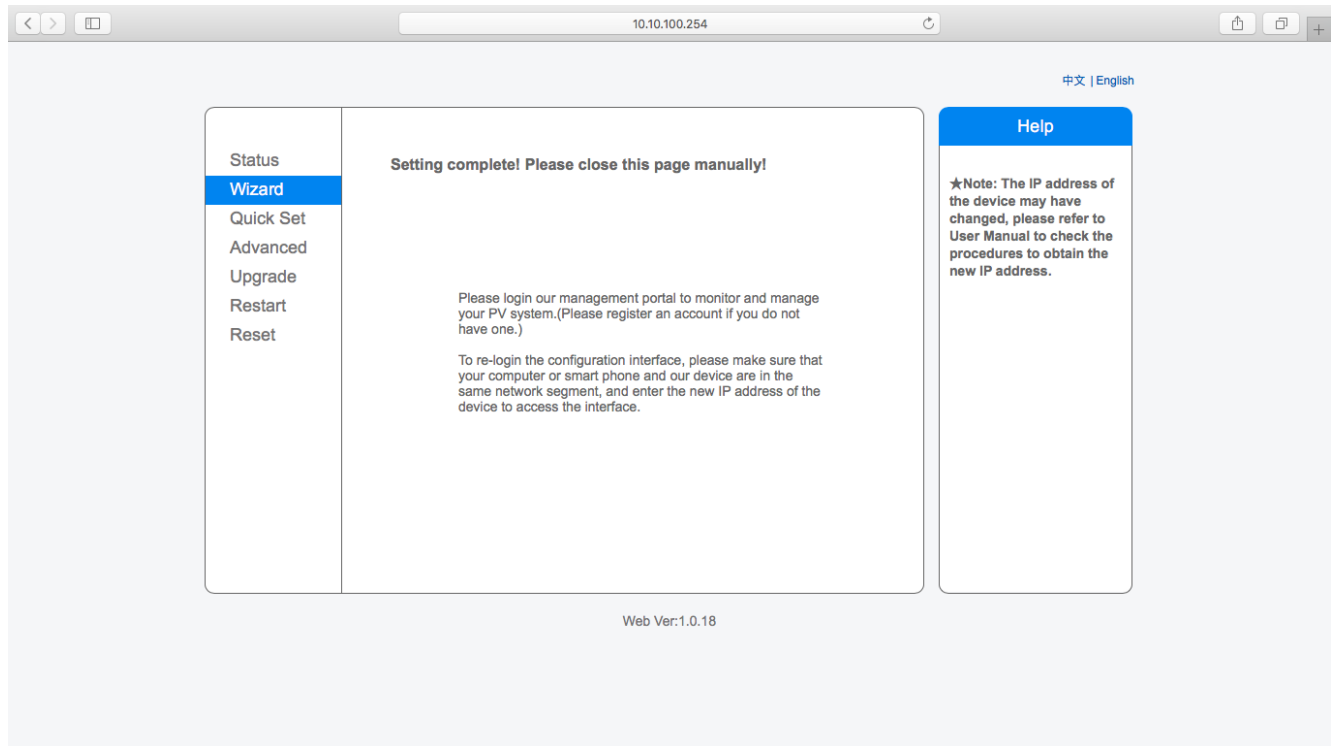


10. Click **OK** and wait for sometimes till you see the screen at point 11. If you don't, refresh the page and do the setup again.



11. You should see this page

**Note:** This page is essential for the setup. If the restart is successful you should see this page



**Refer to the other document “m.ginlong.com setup” that explains how to make an account on our cloud portal m.ginlong.com as well as use the Android or iPhone app.**